



RIZVI EDUCATION SOCIETY'S

RIZVI LAW COLLEGE

New Rizvi Educational Complex, Off Carter Road, Bandra (West), Mumbai 400 050
Phone: 2600 2230, 2600 2222.

7.1.7

The Institution has friendly, barrier free environment

- **Built environment with ramps/lifts for easy access to classrooms.**
- **Divyangjan friendly washrooms**
- **Signage including tactile path, lights, display boards and signposts**
- **Assistive technology and facilities for Divyangjan accessible website, screen-reading software,**
- **Mechanized equipment**
- **Provision for enquiry and information: Human assistance, reader, scribe, soft copies of reading material, screen reading**

Response :- Any 3 of the above

Dr. Sajan G. Patil
I/c Principal





RIZVI EDUCATION SOCIETY'S

RIZVI LAW COLLEGE

New Rizvi Educational Complex, Off Carter Road, Bandra (West), Mumbai 400 050
Phone: 2600 2230, 2600 2222.

Sr. No.	Index
1.	Institutional Policy for inclusion for persons with disabilities
2.	Circular regarding guidelines for conducting written examinations for Persons with disabilities.
3.	Geotagged Photos

Dr. Sajan G. Patil
I/c Principal





RIZVI EDUCATION SOCIETY'S

RIZVI LAW COLLEGE

New Rizvi Educational Complex, Off Carter Road, Bandra (West), Mumbai 400 050
Phone: 2600 2230, 2600 2222.

1. INSTITUTIONAL POLICY FOR INCLUSION FOR PERSONS WITH DISABILITIES

In keeping with its mission Rizvi Education Society's Rizvi Law College upholds the values of inclusivity and diversity while pursuing excellence. The Institute works to advance social justice and disability rights by advancing the values of equality, fairness, and empathy.

In light of this, the Institution carries out the following:

1. To encourage a culture of inclusion and fairness for Divyangjan, or people with disabilities.
2. Launch education campaigns about the rights of Divyangjan or those with disabilities.
3. Develop teamwork materials that are accessible to students with disabilities by uncurling online resources.
4. Promote research on disabilities.
5. Provide workplace adjustments for everyone who might be handicapped.
6. Provide institute teachers with instruction on various teaching philosophies through training programs, methods of evaluation, etc., to accommodate students with disabilities.
7. As required by the Rights of Persons with Disabilities Act of 2016, endeavor to provide an infrastructure that is accessible and free of barriers.
8. Establish an Equal Opportunity Cell with an emphasis on diversity and inclusion.
9. As required by the relevant authorities, make sure that accommodations for students with impairments are provided.
10. Use of information and communication technology to provide resources that are accessible to people with disabilities.

Dr. Sajan G. Patil
I/c Principal



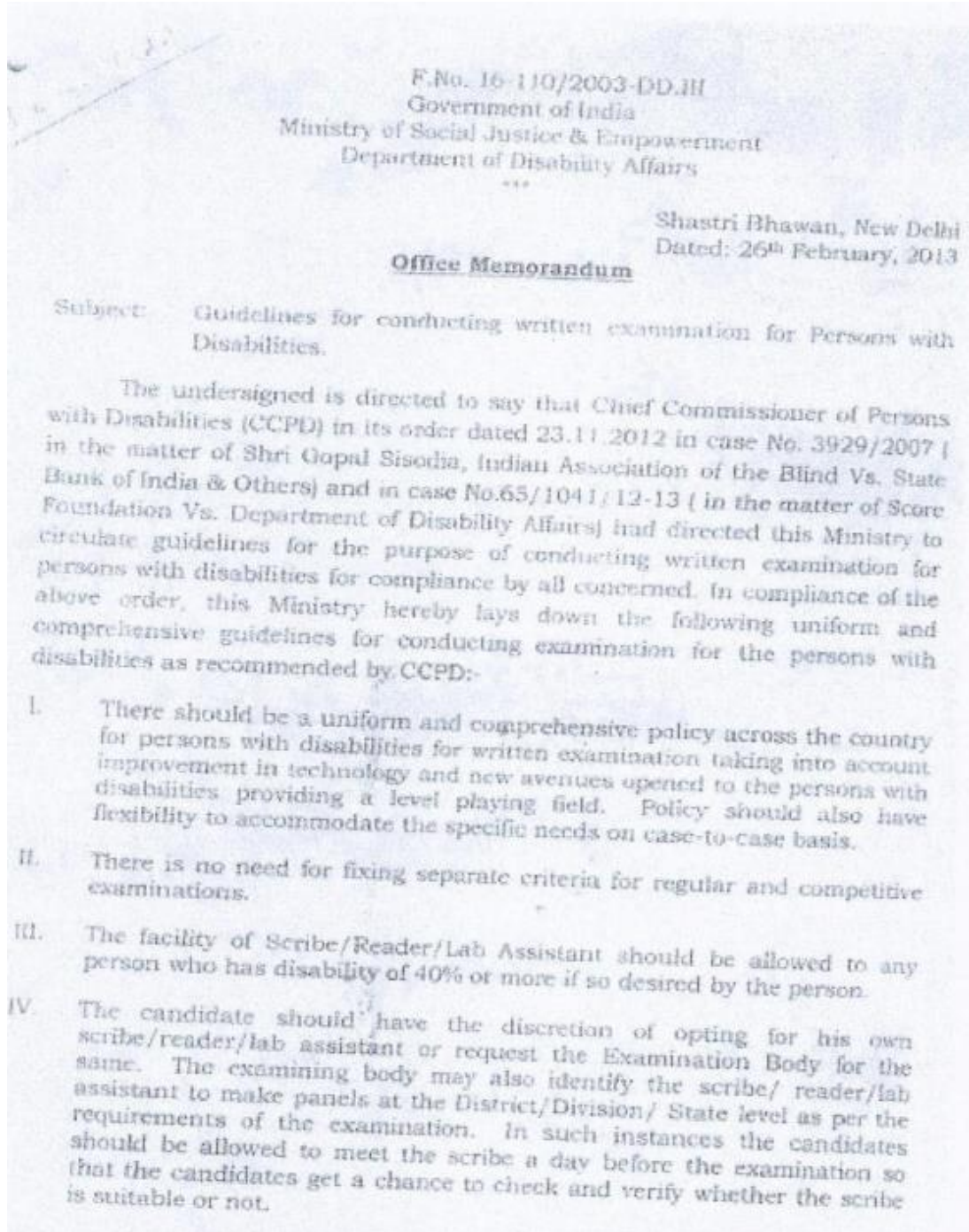


RIZVI EDUCATION SOCIETY'S

RIZVI LAW COLLEGE

New Rizvi Educational Complex, Off Carter Road, Bandra (West), Mumbai 400 050
Phone: 2600 2230, 2600 2222.

2. CIRCULAR REGARDING GUIDELINES FOR CONDUCTING WRITTEN EXAMINATIONS FOR PERSONS WITH DISABILITIES.



Dr. Sajan G. Patil
I/c Principal





RIZVI EDUCATION SOCIETY'S

RIZVI LAW COLLEGE

New Rizvi Educational Complex, Off Carter Road, Bandra (West), Mumbai 400 050
Phone: 2600 2230, 2600 2222.

Concessions to students with Learning Disability, in the Govt., Govt.-aided / Professional and Non- professional colleges in Non-agricultural universities / Engineering / Polytechnics and Teachers Training Colleges.

Govt. of Maharashtra
Higher and Technical Education Dept.
Circular No. USC 2044/86-94 Extra Ord. 4.
Mantelay Avenue, Mumbai 400 022.
26th August 2004.

- 1) Govt. Resolution School Education Department No.SSC 1099/151/95 HSC- 2 Dt 28th Nov.2000.
- 2) Govt. Resolution, School Education Dept. No.MISC-1021(1501) Primary Education 5 dt. The 13th November 2001.
- 3) Govt. circular, School Education Dept. No.MISC1021/1501- Primary Education 5 dt. The 17th September 2003

Preamble - Various Concessions to Learning Disabled students upto Std.XII have been given vide Govt. Resolutions referred to above. The proposal of giving same concessions to the students having learning disability, studying in Colleges / Engineering (Degree/Diploma) and Teachers Training Colleges, was under consideration of the Govt.

Govt. Resolution: The Govt. has taken a decision to give following concessions to the students having learning disability in Govt./Govt.- aided / Professional and Non-professional/Colleges under Non- Agricultural Universities / Engineering / Polytechnics and Teachers Training Colleges. Accordingly, all concerned are informed that students having Dyslexia, Dyscalculia, Dysgraphia are included as students with learning disability and are being given following concessions:

Concessions to students with Learning Disability :

- 1) Oral examination of students with Learning Disability should be taken by the Professors concerned at the time of unit tests and semester / term examinations. Marks obtained should be noted / recorded and their annual average be worked out. On the basis of these marks, promotion to the next class will be decided.
- 2) All students with Learning Disability should be provided writers at the time of written examination. They should also be given half an hour extra time than the stipulated time at each examination.
- 3) The students with Learning Disability should be given examination center near their houses.
- 4) The student should be exempted from drawing figures, maps, charts, graphs etc. in the written examination. They will get the facility of adjusting the marks of these questions and sub-questions / supplementary questions.
- 5) These students will be permitted to submit certificates from the concerned recognized/authorized institutions to the effect that they have completed the required work-experience / social service and practicals.

Dr. Sajan G. Patil
I/c Principal





RIZVI EDUCATION SOCIETY'S

RIZVI LAW COLLEGE

New Rizvi Educational Complex, Off Carter Road, Bandra (West), Mumbai 400 050
Phone: 2600 2230, 2600 2222.

3. GEOTAGGED PHOTOS

Sr. No.	Data
1.	Disabled friendly toilets
2.	Ramps
3.	Barrier Free walks
4.	Wide Corridors/ Barrier Free Corridors
5.	Elevators
6.	Wheelchair

1. Disabled friendly toilets



Dr. Sajan G. Patil
I/c Principal



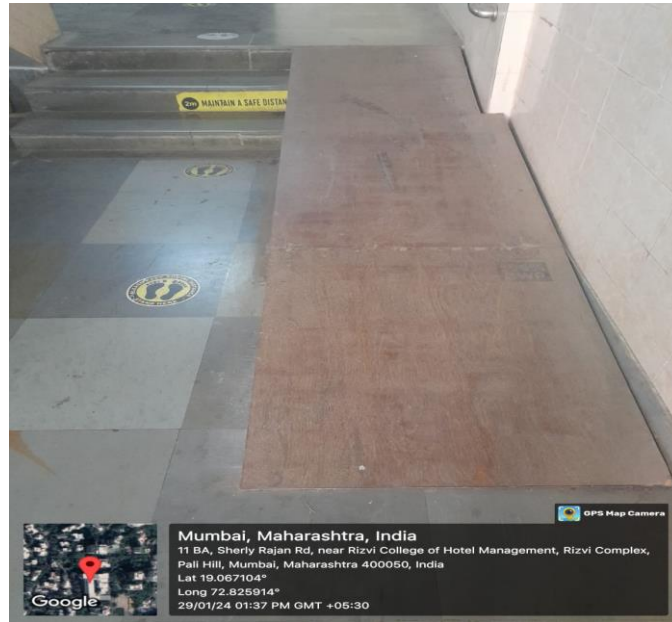


RIZVI EDUCATION SOCIETY'S

RIZVI LAW COLLEGE

New Rizvi Educational Complex, Off Carter Road, Bandra (West), Mumbai 400 050
Phone: 2600 2230, 2600 2222.

2. Ramp



3. Barrier Free walks



Dr. Sajan G. Patil
I/c Principal





RIZVI EDUCATION SOCIETY'S

RIZVI LAW COLLEGE

New Rizvi Educational Complex, Off Carter Road, Bandra (West), Mumbai 400 050
Phone: 2600 2230, 2600 2222.

4. Wide Corridors/ Barrier Free Corridors



Dr. Sajan G. Patil
I/c Principal





RIZVI EDUCATION SOCIETY'S

RIZVI LAW COLLEGE

New Rizvi Educational Complex, Off Carter Road, Bandra (West), Mumbai 400 050
Phone: 2600 2230, 2600 2222.

5. Elevators



6. Wheelchair



Dr. Sajan G. Patil
I/c Principal

